

Your Guide to the Main Dog Grooming Styles

Every dog owner knows how a great haircut can change everything. My Labrador's first grooming session was a game-changer. Seeing her walk out with confidence showed me grooming is more than looks. It's about their health too.

Finding the right grooming style for your dog can be tough. Whether your dog is fluffy or sleek, knowing the right grooming is key. It keeps them comfortable and healthy.

Professional groomers have many styles for your dog's coat, lifestyle, and breed. They offer cuts that are easy to maintain and styles that show off your dog's personality. There's a perfect grooming solution for every dog.

Key Takeaways

- Professional grooming supports your dog's overall health
- Different coat types require specific grooming approaches
- Regular maintenance prevents matting and skin issues
- Seasonal cuts help dogs adapt to temperature changes
- Choose a style that suits your dog's breed and lifestyle

Understanding Different Dog Coat Types and Their Needs

Every dog's coat is special, and knowing its type is key for good grooming. Different coats need different care to stay healthy and look great. Whether your dog has short fur or long, understanding their coat is the first step.

Dogs have many coat types, each with its own grooming needs. These differences affect how often you brush and what tools

you use.

Short and Smooth Coats

Short-coated dogs like Boxers and French Bulldogs are easy to groom. They have:

- Need brushing 2-3 times a week
- Shed less outside of seasonal changes
- Can get oily skin if not groomed

Long and Flowing Coats

Long-coated dogs, like Yorkshire Terriers, need more grooming. A **retriever tidy** approach works well for them:

- Brush daily to avoid mats
- Get regular trims to keep shape
- Use special tools for detangling

Curly and Dense Coats

Poodles and Bichon Frises have curly coats that need special care:

- Need regular professional grooming
- Get trims to keep curls right
- Can mat if not kept up

Remember, understanding your dog's coat is the first step to keeping them looking and feeling their best!

Each coat type has its own challenges. But with the right knowledge and tools, you can keep your dog happy, healthy, and looking great.

The Benefits of Professional Dog Grooming

Professional dog grooming does more than make your dog look good. It’s key to keeping them healthy and happy. Groomers give your dog more than just a nice haircut.

Professional grooming helps in many ways:

- Early detection of health problems
- Keeping skin and fur in top shape
- Stopping parasites
- Keeping your dog clean and comfy

Regular grooming helps find health issues early. Groomers know how to spot small changes in your dog’s skin. They can see things that you might miss.

Grooming Benefit	Health Impact
Nail Trimming	Prevents posture issues and joint problems
Ear Cleaning	Reduces risk of ear infections
Coat Maintenance	Prevents matting and skin conditions

Vets say groom your dog every 4-6 weeks for the best coat. Groomers use special tools like high-velocity dryers. These tools are not common, so your dog gets a top-notch grooming.

Choosing professional dog grooming boosts your dog’s health and happiness. It’s a big step in improving their life.

Main Dog Grooming Styles for Every Breed

Dog grooming is more than just keeping them clean. It’s an art that can change how your dog looks and feels. Different styles not only make your dog look great but also help their health.

Professional groomers use many techniques to fit different coats and breeds. Let’s look at three popular styles that can make your dog look amazing.

Puppy Cut: A Versatile Favourite

The **puppy cut** is a favourite for many breeds. It cuts the fur short all over the body. It’s good for:

- Dogs with long or medium-length coats
- Active dogs prone to matting
- Owners who want easy grooming

Teddy Bear Trim: Cuddly and Cute

A **teddy bear trim** makes your dog look fluffy and cute. It keeps the fur a bit longer for a soft, cuddly look. It’s perfect for breeds like Shih Tzus and Poodles.

Lion Cut: Dramatic and Distinctive

The **lion cut** is bold and eye-catching. It makes your dog look like a lion. This style:

- Clips the body fur very short
- Leaves longer fur on the head and neck
- Creates a striking silhouette

Each style can be adjusted to fit your dog’s needs. This ensures they look great and feel comfortable.

Grooming Style	Best For	Maintenance Level
Puppy Cut	Active dogs, breeds prone to matting	Low
Teddy Bear Trim	Fluffy breeds, small to medium dogs	Medium

Lion Cut	Breeds with thick coats, hot climates	High
-----------------	--	------

The right grooming style can make your dog look amazing. It also keeps them cool, comfortable, and healthy.

Popular Summer Grooming Options

<https://www.youtube.com/watch?v=1JXhZ2xUhPg>

As summer gets hotter, keeping your dog cool is key. The idea of a **summer shave** might seem good. But it's not right for every dog breed.

Knowing your dog's coat type is vital. Dogs with double coats need extra care. Breeds like Huskies, Samoyeds, and Chow Chows have coats that keep them warm and cool.

- Daily brushing helps reduce shedding and prevents matting
- Trim long coats to help dogs stay cool
- Avoid complete shaving of double-coated breeds

Professional groomers suggest other ways to keep dogs cool:

1. Light trim instead of a full **summer shave**
2. Regular brushing to improve air circulation
3. Using cooling accessories like wet bandanas

**"A well-groomed dog is a comfortable dog"* – Professional Dog Groomer's Wisdom*

Some important summer grooming tips include checking for *potential skin irritations*. Also, protect your dog from extreme temperatures. Remember, if the ground is too hot for you, it's too hot for your dog's paws!

Talking to a professional groomer can help find the best summer grooming for your dog. This way, your dog will stay

cool, comfortable, and stylish all summer.

Specialised Breed-Specific Cuts

Dog grooming is more than keeping them clean. It's an art that celebrates each breed's special traits. Some breeds have iconic cuts that show their unique personality and history.

Professional groomers know each breed needs a special approach. This keeps their traditional look and ensures their health. Some cuts are not just for looks but also for practical reasons.

Poodle Continental Trim

The **continental trim** comes from Germany and highlights the Poodle's athletic build. It involves sculpted fur around the body. This leaves fur patches that protect vital organs and allow for movement.

- Emphasises the dog's muscular physique
- Requires precise professional grooming skills
- Traditionally used for hunting Poodles

Schnauzer Style

Schnauzer grooming is unique, focusing on their beard and eyebrows. The traditional schnauzer cut keeps their rugged, intelligent look. It also makes them neat and comfortable.

- Hand-stripping maintains coat texture
- Preserves the breed's distinctive facial features
- Requires specialised grooming techniques

Yorkshire Terrier Top Knot

Yorkshire Terriers often have a cute top knot. This keeps their hair away from their delicate eyes. It's both charming and practical for these small, lively dogs.

Remember, breed-specific cuts are more than just a fashion statement—they reflect each dog's unique heritage and practical needs.

Essential Maintenance Cuts



Regular maintenance cuts are key to a healthy dog coat. The **lamb cut** is a favourite among pet owners. It's a stylish and easy way to groom your dog between professional visits.

A **lamb cut** typically involves:

- Trimming body hair short
- Leaving leg hair slightly longer
- Creating a soft, rounded appearance
- Reducing overall coat maintenance

Different breeds need different grooming. For curly-coated dogs, the **lamb cut** is perfect. It stops matting and keeps them cool. The groomer uses special clippers to keep the coat looking good and feeling natural.

Home grooming is important too. It includes:

1. Brushing to remove loose fur
2. Trimming around eyes and paws
3. Checking for skin irritations
4. Maintaining sanitary areas

Before getting a lamb cut, talk to a professional groomer. They know what your breed needs. They can give you tips on keeping your dog's coat healthy and looking great.

Seasonal Grooming Considerations

Your dog's coat changes a lot throughout the year. This makes seasonal grooming very important. Knowing how each season affects your dog's coat helps you care for them better.

Every season brings its own grooming needs. By changing your grooming routine, you can keep your dog healthy and looking great.

Winter Protection

Winter is tough on your dog's coat and skin. Cold weather can make their skin dry and irritated. Here's what you need to do:

- Use moisturising shampoos to fight dry air
- Keep hair around paws short to stop ice and salt
- Brush regularly to spread natural oils
- Don't over-bathe to keep skin moist

Summer Cooling

Summer grooming is all about keeping your dog cool. It's important to know what grooming is best for your dog:

- Brush often to remove extra undercoat
- Apply pet-safe sunscreen to light-coloured dogs
- Don't shave too much for double-coated breeds
- Check for ticks and fleas often

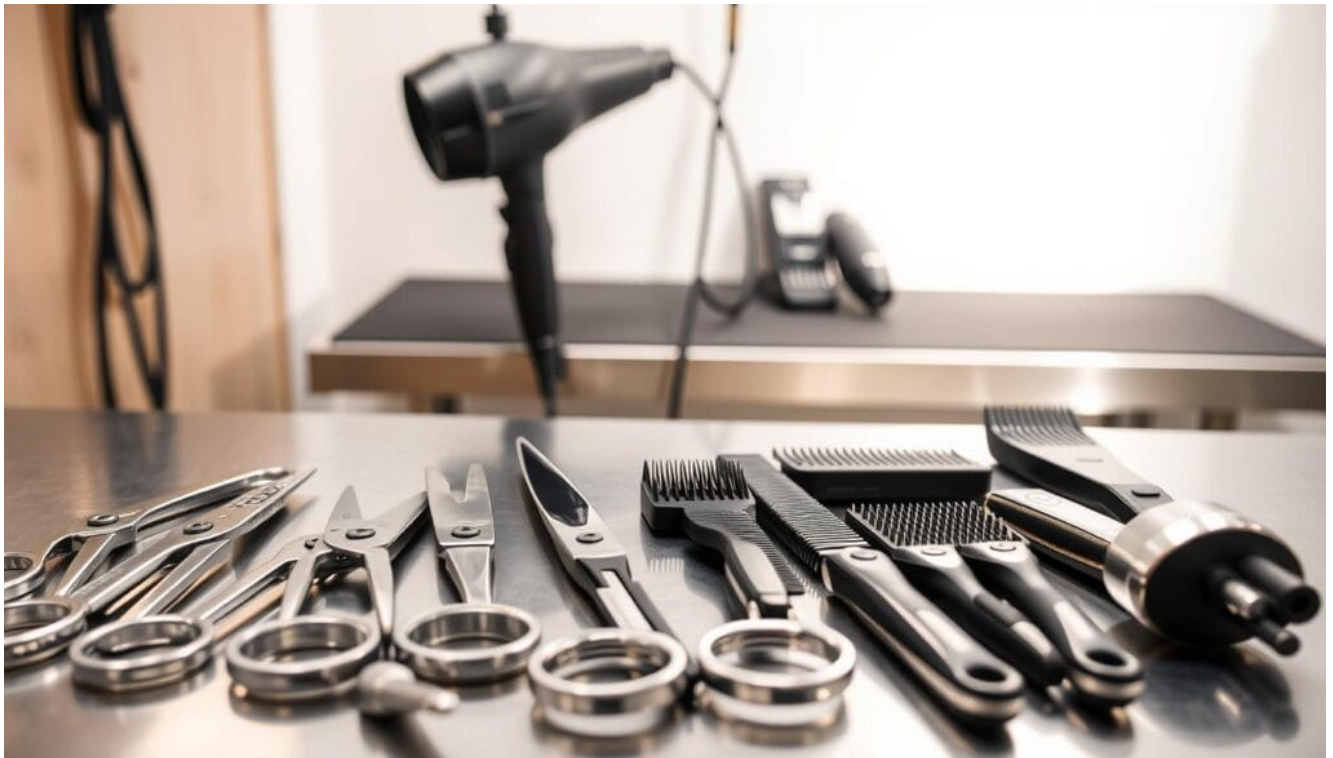
Spring Shedding

Spring is when most dogs shed the most. Good grooming can help reduce shedding and keep their coat healthy:

- Brush more often
- Use hypoallergenic shampoos to avoid skin problems
- Watch for signs of allergies
- Feed a diet rich in omega fatty acids

Pro tip: Always talk to a professional groomer to find the best grooming for your dog's breed.

Professional Grooming Tools and Techniques



Professional dog groomers use special tools to get the perfect **poodle clip**. They also keep the dog's coat healthy. Knowing these tools can change how you groom your dog.

The main tools groomers use are:

- Professional-grade clippers for precise **poodle clip**

techniques

- Various brushes matching different coat types
- Specialised scissors for detailed trimming
- Grooming tables for safety and precision

Different dogs need different grooming. *Slicker brushes work well for most fur types.* Special tools help with specific grooming needs. Clippers are best for long, thick fur, while trimmers are for fine details.

For a **poodle clip** or any style, groomers focus on four key steps:

1. Thorough brushing
2. Careful bathing
3. Proper drying
4. Precise trimming/clipping

Every dog needs a grooming plan that fits them. Choosing the right tools and techniques is crucial for your dog's comfort and coat health.

Health and Safety in Dog Grooming

Keeping your dog safe during grooming is very important. Professional grooming needs careful attention to avoid health risks and keep your pet happy.

Grooming can be stressful for dogs, with about 30% of owners saying their pets get anxious. Knowing how to groom your dog right is key for both of you.

Avoiding Common Mistakes

When looking at different grooming styles, there are a few big mistakes to avoid:

- Using the wrong grooming tools for your dog's coat
- Cutting too close to the skin

- Not cleaning grooming tools often enough
- Using human grooming products on dogs

More than 50% of owners make the mistake of using human products on their pets, which can really irritate their skin.

Signs of Skin Issues

Keep an eye out for skin problems like:

- *Redness or inflammation*
- Unusual bumps or lumps
- Excessive scratching
- Dry or flaky skin

Professional groomers find skin issues in about 25% of their appointments. This shows how important it is to check your dog's skin carefully.

When to Seek Veterinary Care

If you see any of these signs, it's time to talk to your vet:

1. Persistent skin irritation
2. Unusual growths
3. Signs of infection
4. Big changes in your dog's coat

Only 15% of pet owners regularly talk to vets about grooming needs.

By focusing on safety and being careful, grooming can be a good experience for your dog. It helps keep them healthy and happy.

Conclusion

Exploring **main dog grooming styles** shows each dog is special. Our guide has covered 20 styles, from fun looks to elegant

trims. These styles let your dog's personality shine.

Your dog's coat, breed, and lifestyle matter when choosing grooming. Whether it's a simple **Puppy Cut** or a fancy style, know what's best for them. Regular grooming keeps them looking good and feeling great.

Experts like Malcolm are here to help with grooming. New trends like mobile grooming and eco-products make care easier. Try new styles and techniques to show your dog love and care.

Grooming is about more than looks; it's about health and happiness. Trust your instincts and enjoy grooming time with your dog. It's a special way to bond with them.

FAQ

How often should I groom my dog?

Grooming frequency varies based on your dog's coat, breed, and lifestyle. Short-haired dogs might groom every 4-6 weeks. Long-haired breeds need more frequent grooming, also every 4-6 weeks. Daily brushing is advised for most breeds to avoid matting and keep the coat healthy.

What is a puppy cut, and is it suitable for all breeds?

A puppy cut keeps the coat short, around 1-2 inches. It's good for many breeds, but some may need a special approach. It's great for dogs that get matted easily or are very active.

Can I groom my dog at home?

You can groom your dog at home with basic tasks like brushing, ear cleaning, and nail trimming. But, professional groomers have the right tools and skills for more complex tasks. For precise cuts, it's best to see a professional.

How do I choose the right grooming style for my dog?

Think about your dog's breed, coat, lifestyle, and climate. For example, some breeds should not be shaved in summer. A professional groomer can help find the best style for your dog.

What is a continental trim?

The **continental trim** is a Poodle grooming style that highlights the dog's athletic look. It involves shaving some parts while keeping fur on the legs, tail, and head. This style needs regular grooming and is best done by professionals.

How can I prevent matting in my dog's coat?

Regular brushing is crucial to prevent matting. Use the right brush for your dog's coat and brush in the right direction. Pay extra attention to areas that easily get tangled. Daily brushing is a must for long-haired breeds.

Are there special grooming considerations for different seasons?

Yes, grooming needs change with the seasons. In winter, keep the coat longer for warmth. In summer, keep it shorter to keep your dog cool. Spring needs extra grooming due to shedding.

What is a lamb cut?

A lamb cut keeps the body fur short but leaves the legs longer. It's popular for breeds like Poodles and Bichon Frises. It's cute and easy to maintain.

How do I know if my dog needs professional grooming?

If your dog has mats, can't groom at home, or has skin issues, they might need a professional groomer. Professionals can also spot health problems early.

What tools do I need for basic at-home dog grooming?

You'll need a slicker brush, metal comb, nail clippers, dog shampoo, ear cleaner, and scissors. The tools depend on your dog's coat and grooming needs. Always use dog-specific tools for safety.